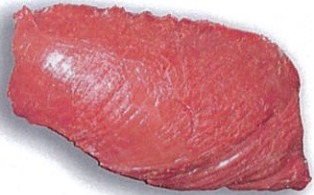


**1 FAN FILLET (F)**

OS 1046

USA: FAN  
CANADA: FAN



**2 EYE FILLET (F)**

OS 1050

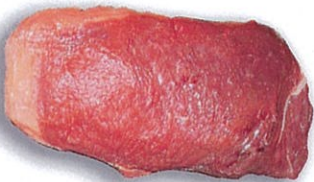
USA: INSIDE STRIP  
CANADA: EYE



**3 TOURNEDOS (F)**

OS 1059C

USA: TOURNEDOS  
CANADA: PEARL



**4 OYSTER FILLET (F)**

OS 1045

USA: OYSTER  
CANADA: OYSTER



**5 LONG FILLET (F)**

OS 1060F

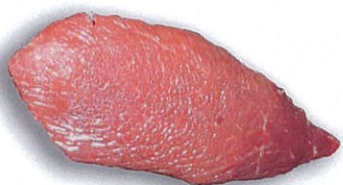
USA: TENDERLOIN  
CANADA: TENDERLOIN (LIGHT)



**6 TRIANGLE (F)**

OS 1036

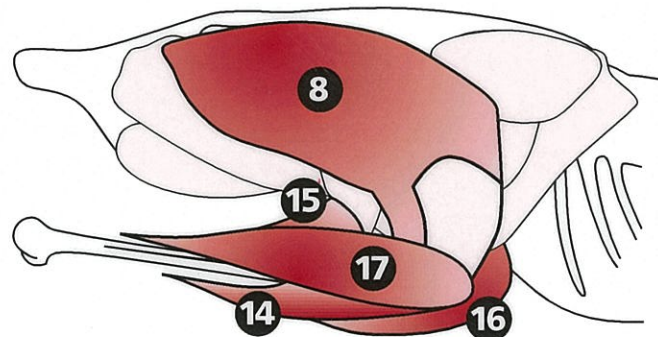
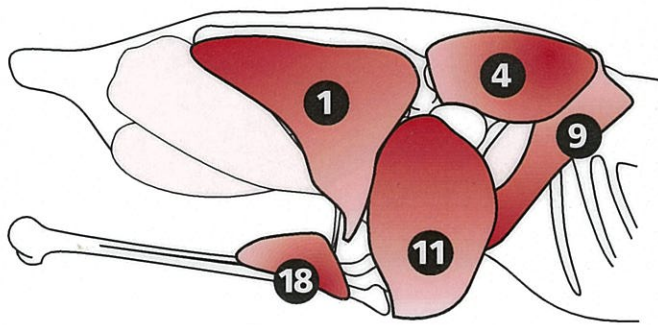
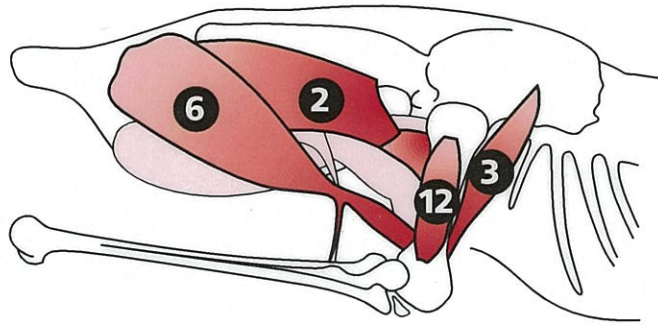
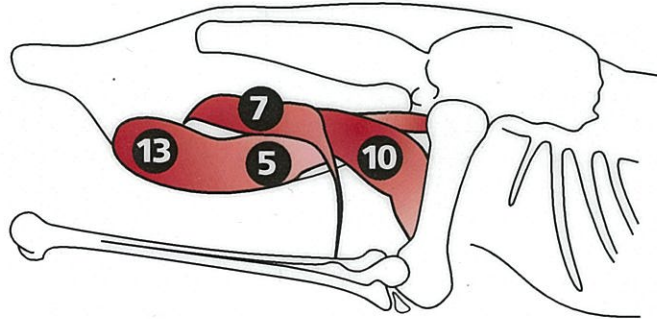
USA: OUTSIDE STRIP  
CANADA: OUTSIDE STRIP



**7 SMALL STEAK (S)**

OS 1037

USA: MIXED STEAK  
CANADA: MINUTE



(F) = FILLET

(S) = STEAK



**18 DRUM FILLET (F)**

USA: LEG FILLET  
CANADA: DRUM FILLET



**17 BIG DRUM (S)**

OS 1013

USA: MIDDLE LEG  
CANADA: OUTSIDE LEG



**16 FLAT DRUM (S)**

OS 1012

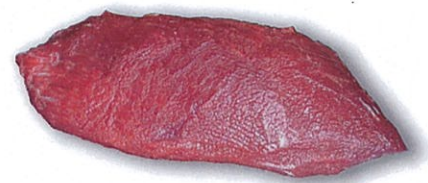
USA: OUTSIDE LEG  
CANADA: HEEL



**15 SMALL DRUM (F)**

OS 1014

USA: INNER LEG  
CANADA: LEG FILLET



**14 DRUM STEAK (S)**

OS 1011

USA: INSIDE LEG  
CANADA: INSIDE LEG



**8 RUMP STEAK (S)**

OS 1035

USA: HIGH ROUND  
CANADA: THIGH



**10 TENDER STEAK (S)**

OS 1038

USA: INNER THIGH  
CANADA: LARGE TIP



**13 LONG STEAK (S)**

OS 1060S

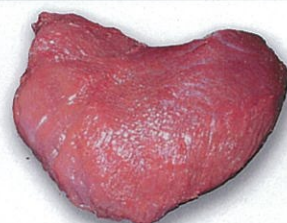
USA: TENDERLOIN DARK  
CANADA: TENDERLOIN (DARK)



**9 TENDERLOIN (F)**

OS 1047

USA: TOP LOIN  
CANADA: TOP STRIP



**11 MOON STEAK (S)**

OS 1041

USA: TIP  
CANADA: MOON



**12 MINUTE STEAK (S)**

OS 1042

USA: MIXED STEAK  
CANADA: TIP STEAK